

# AD903D Assembly Guide

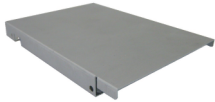
## Before Assembling:

1. Please check the accessory list before assembly. Contact your local dealer if you find any parts missing.
2. Please read through the assembly guide.

### 2.5" Aluminum Housing

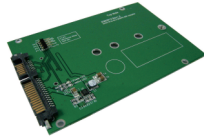


Top side

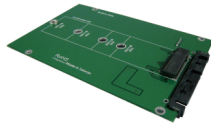


Bottom side

### AD903D Adapter



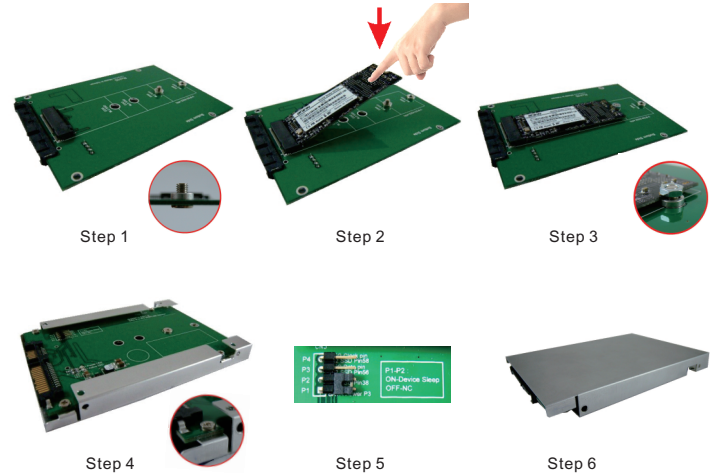
Top side



Bottom side

### Accessory Package

(1)M3x5 Screw *1pc P/N: 13MISW00005M11		[for M.2 NGFF SSD]
(2)M3 Nut *1pc P/N: 13MINU00002M11		[for M.2 NGFF SSD]
(3)Copper Nut /H: 1.45mm *1pc P/N: 13MICA00001M05		[for M.2 NGFF SSD]
(4)Jumper *1pc P/N: 12MI0400002M24		[for Device Sleep]
(5)M2x3 screw *5pcs P/N: 13MISW00005M11		[for 2.5" Housing]



Step 1: Put copper nut on the same side of the NGFF connector; and screw M3x5mm screw from bottom to top of the adapter.

Step 2: Insert M.2 NGFF SSD into M.2 67pin socket. Press down M.2 NGFF SSD and aim to the copper nut hole.

Step 3: Using M3 nuts to fixed M.2 NGFF SSD on the adapter (Figure 4), namely complete the installation.

**If your M.2 NGFF SSD is 2280 form factor, pls ignore step 1. Use M3 x 3 Screw to fix M.2 NGFF SSD.**

Step 4: Assembly adapter into 2.5" SSD aluminum housing with 4pcs of M2x3 screw to fix.(Figure 5)

Step 5: If you like to have Device Sleep mode function for M.2 SSD, please use spare jumper to short Pin-1 and Pin-2.

Step 6: Turn down the complete 2.5" SSD (M.2 SSD +adapter+2.5" housing), assemble it into laptop or desktop PC.